

# Protecting the environment

The A66 runs through a beautiful and unique landscape that includes the Lake District National Park, the Yorkshire Dales National Park and the North Pennines Area of Outstanding Natural Beauty. We're giving extra consideration to how we can protect this extraordinary environment. At every stage of the project, we have sought to balance essential upgrades to the A66 with protecting the landscape.

We will be paying special attention to areas such as:

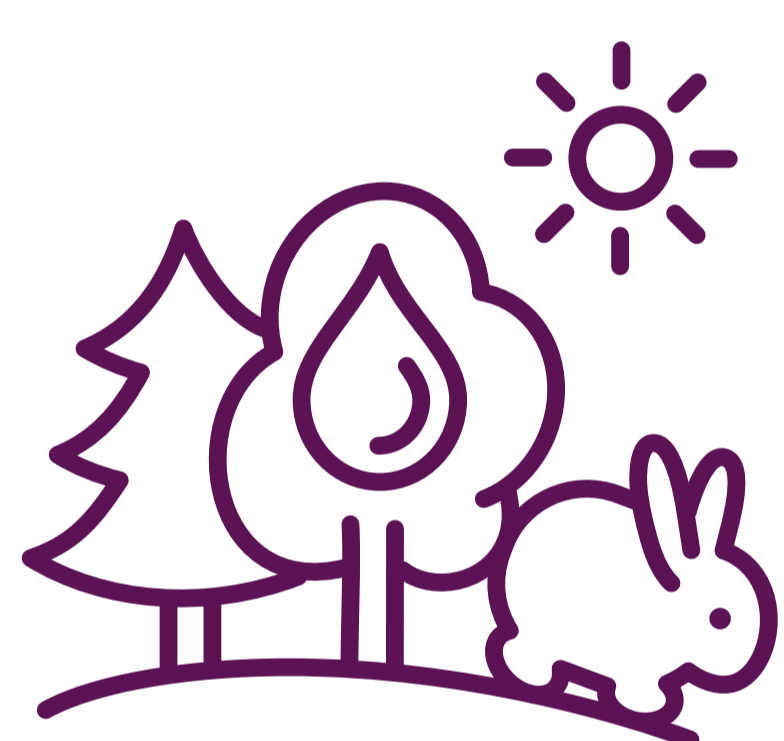
- The Lake District National Park
- The Yorkshire Dales National Park
- The Area of Outstanding Natural Beauty (AONB)
- Sites of Special Scientific Interest (SSSI)
- Special Areas of Conservation
- Special Protection Areas
- The Air Quality Management Areas (AQMA)
- Noise Important Areas (NIA)

At Highways England, sustainability shapes our thinking and decision-making. Following the public consultation in 2019, we took your feedback on environmental concerns on board and have considered this during our environmental surveys to ensure our route reflects what is best for the local landscape.

We have assessed the following environmental topics:



**Air quality**



**Biodiversity**



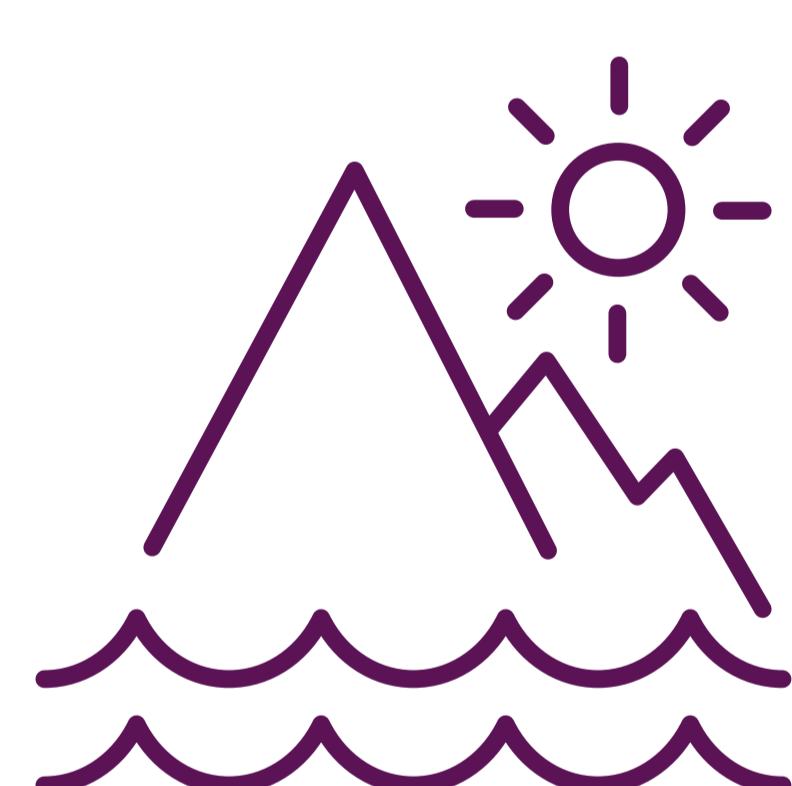
**Climate**



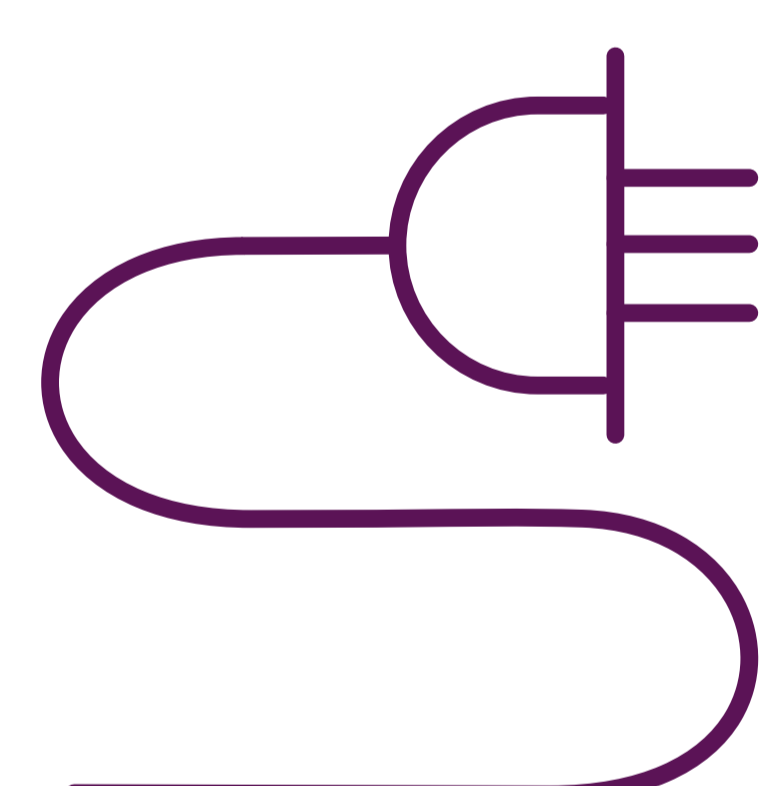
**Cultural heritage**



**Geology and soils**



**Landscape and visual effects**



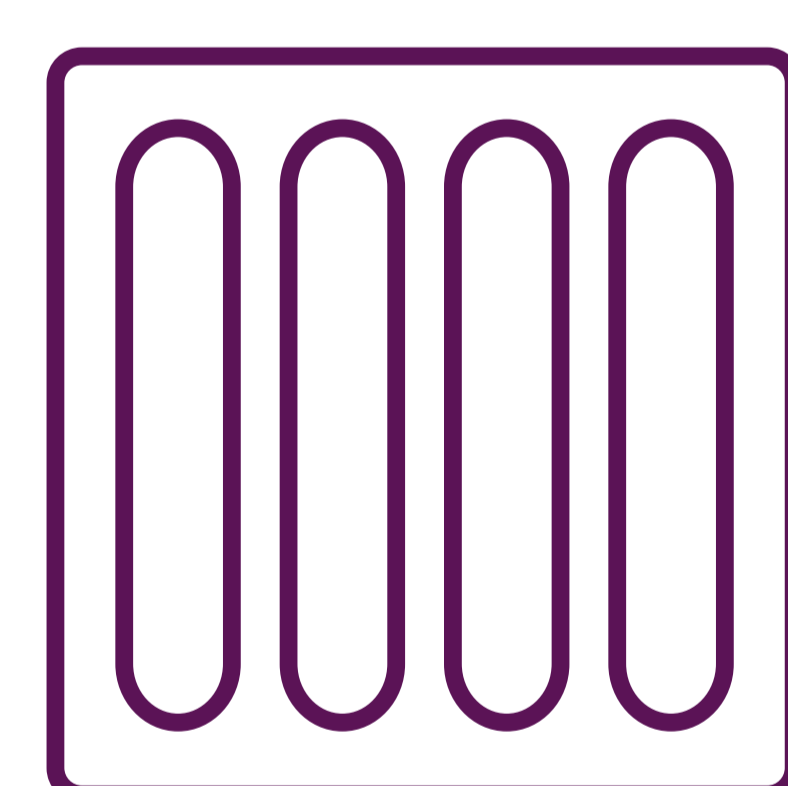
**Resources used by the project**



**Noise and vibration**



**Population and human health**



**Road drainage and water environment**

We've used geophysical surveys and trial trenching to understand the archaeological potential of our sites. Through these ground surveys, we are better placed to protect the Roman heritage along the route.

We are shaping the future of this project by working with local communities, specialists and stakeholders.

More information on environmental considerations can be found in our consultation brochure, in our Preliminary Environmental Information Report (PEI Report) and its non-technical summary.